



Reel Partner for Cable & Wire



---

**Your Leading  
Wooden & Steel  
Reel Partner**

---





---

## Contents

---

- 04** Your Preferred Reel Partner
- 06** The Weng Meng Advantage
- 08** Wooden Reel: Delivering Economical Innovation
- 16** Steel Reel: Delivering Strength and Durability
- 28** Our Daily Commitment to the Environment
- 30** We Believe in Partnership
- 31** Certifications

This information pack, published in 2017, serves as an introduction to our comprehensive range of reels. It is a summary of the thinking and technology that goes into our wooden and steel reel ranges. Meanwhile, we are continuously researching and developing newer methods and materials, and may add to the portfolio of products presented here.





---

## Your Preferred Reel Partner

---

Weng Meng has been in the business of reels for over 38 years. From our humble beginnings as a manufacturer of assorted timber joinery products such as wooden cable reels, wooden pallets, and office furniture and fittings, we have grown to become the largest manufacturer and supplier of wooden and steel cable reels in the region.

While firmly rooted in Malaysia, we export all over the world. Our pioneering spirit and passion for craftsmanship drives our market orientation and innovation. Our CAN DO! values of Credibility, Adaptability, Nurturing, Diversity and Openness provide the foundation for how we behave and do business.

Growth for us is not just about getting bigger. Growth is also about showing greatness. We pride ourselves on being a family business that will grow through the generations. We aspire to build the best products in the most sustainable manner. And we hope to bring out the best in our people and inspire others to do the same. Our vision is to become a sustainable role model company that creates positive impact to People and Place.



# The Weng Meng Advantage

We are practitioners of the Japanese Kaizen philosophy of continuous improvement. We believe small improvements compound to make big differences to People and Place. We have decades of experience with wood and steel as materials. Our product range is continuously being developed and enhanced.



## Adaptability and Flexibility

We have a history of creating innovations that have become industry standards. In many cases, this required us to break conventions, but we have never compromised on quality. Our reels are built from scratch and can be customised to different specifications. Customers can benefit from our technical expertise and innovation.

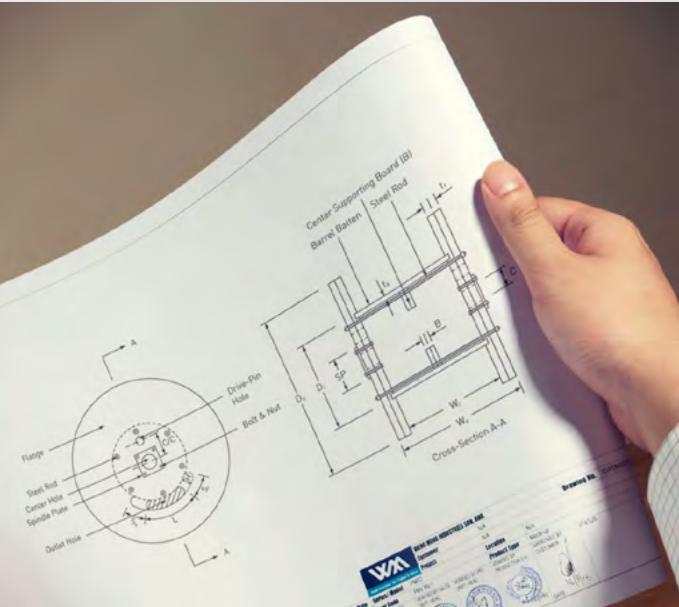
## Cutting-Edge Capabilities

Our reels are produced in a 20-acre manufacturing and research and development facility in Kuala Langat, Malaysia. We invest heavily in machinery and automation in order to improve on our consistency, efficiency and proficiency. We invest in our team of designers and engineers so that we can improve on our standards while creating better performance reels.



## Quality Assurance

We have the internal capability to ensure that our reels are durable, beautifully constructed, timely and competitively priced. We have a strong track record and reputation for on-time delivery. Our customers value our quality assurance, flexibility and adherence to deadlines.



## The Detail is in the Design

As an innovator in the reels industry, our product range has grown in line with customer needs. Our focus on research and development allows us to continuously innovate to remain at the forefront of reel technology. By assembling all our reels in a quality controlled factory environment, we can thoroughly test our products before taking them to market to ensure that they meet local and global certified performance levels.



## Partners for the Long Haul

Customers are at the heart of everything we do. We have dedicated teams committed to ensuring reliability and service to customers from conception to completion. Every member of our team undergoes intensive and ongoing training so that they are kept up-to-date with our products. This way, customers are assured of a speedy response and best practice knowledge for smooth running of projects.



# Wooden Reel

## Delivering Economical Innovation

We manufacture wooden reels as an economical solution for a wide range of wire and cable applications. Working closely with our customers, we can develop solutions which are fit for purpose, functional and offer longevity, while being mindful of budgetary constraints and long-term maintenance considerations.



### Manufacturing Highlights



#### Large Production Capacity

Our factory is equipped to produce up to 10,000 pieces of wooden reels of different sizes and specifications each month. We can easily accommodate any surge in demand for reels.



#### Knock-down Design System

Our knock-down design system helps increase the efficiency of assembling, dismantling and reassembling reels. Customers can save on transportation costs and the reels can be easily assembled in their plants using bolts.



#### Customisation

Our state-of-the-art manufacturing facility and technical expertise enables us to engage in new product development and custom work.



#### Aesthetics

Our cable reels can be made available in a variety of paint finishes. This may help in the differentiation of reels for different purposes.

### Market Presence



Our wooden reels are exported worldwide. We supply to major wire and cable industry giants such as Fujikura Federal Cable, Kiswire, Leader Cable, Opcom Cable, Power Cable, Tenaga Cable Industries, Prysmian Group, Universal Cable and many more. Our key export markets are Indonesia, Sri Lanka, Singapore and the Middle East.





---

## Wooden Reel Factory

---

Our wooden reels provide economical and innovative packing solutions for a wide range of wire and cable applications. Our factory is equipped to produce up to 10,000 pieces of varied wooden reels each month. This allows us to accommodate any surge in demand.



# Wooden Reel

- ▶ **Material:** Mixed Hard Wood / Soft Wood
- ▶ **Sizes:** Flange Ø 600mm to 2,900mm
- ▶ **Loading Weight:** Up to 4 tonne



▶ **Ideal for:**  
Wire and cable rope packing



# Wooden Reel (With Compartment)

- ▶ **Material:** Mixed Hard Wood / Soft Wood
- ▶ **Sizes:** Flange Ø 600mm to 2,900mm
- ▶ **Loading Weight:** Up to 4 tonne



▶ **Ideal for:**  
Wire and cable rope packing. The compartment accommodates wire ropes with small bending radius



# Wooden Reel (Oversize >3 Meter)

- ▶ **Material:** Mixed Hard Wood / Soft Wood
- ▶ **Sizes:** Flange Ø >3,000mm
- ▶ **Loading Weight:** Up to 4 tonne



▶ **Ideal for:**  
Wire and cable rope packing



# Hybrid Reel

- ▶ **Material:** Mild Steel / Soft Wood
- ▶ **Sizes:** Flange Ø 1,600mm to 2,500mm
- ▶ **Loading Weight:** Up to 5 tonne

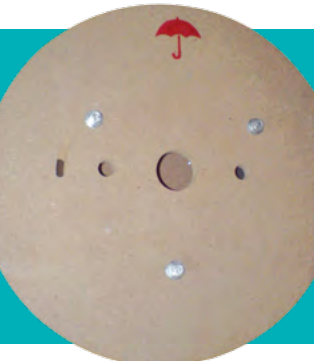


▶ **Ideal for:**  
Cable packing. It captures a higher loading capacity compared to wooden reels

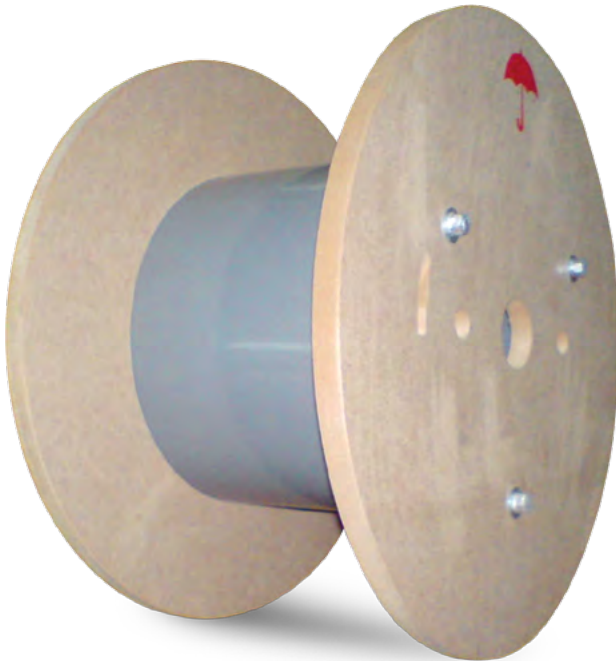


MDF Bobbin

- ▶ **Material:** MDF Board / Plastic Pipe
- ▶ **Sizes:** Flange Ø 600mm to 1,200mm
- ▶ **Loading Weight:** Up to 50kg



▶ **Ideal for:**  
Cable packing



Standard Dimensions

With Heat Treatment / Kiln Dry

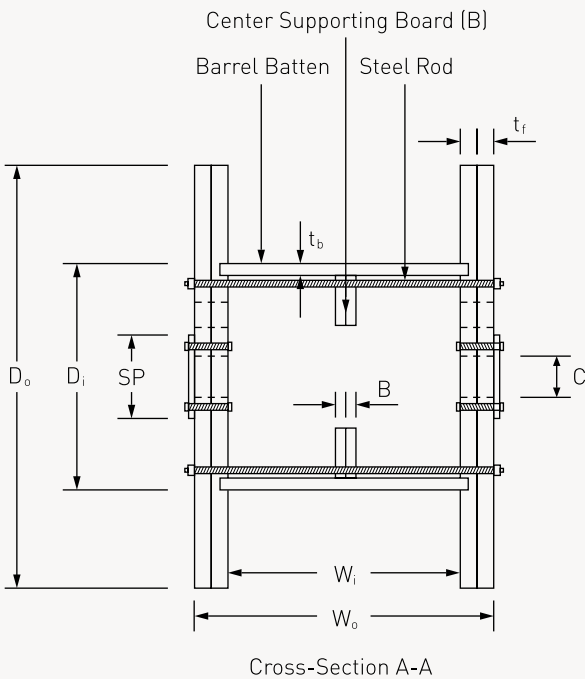
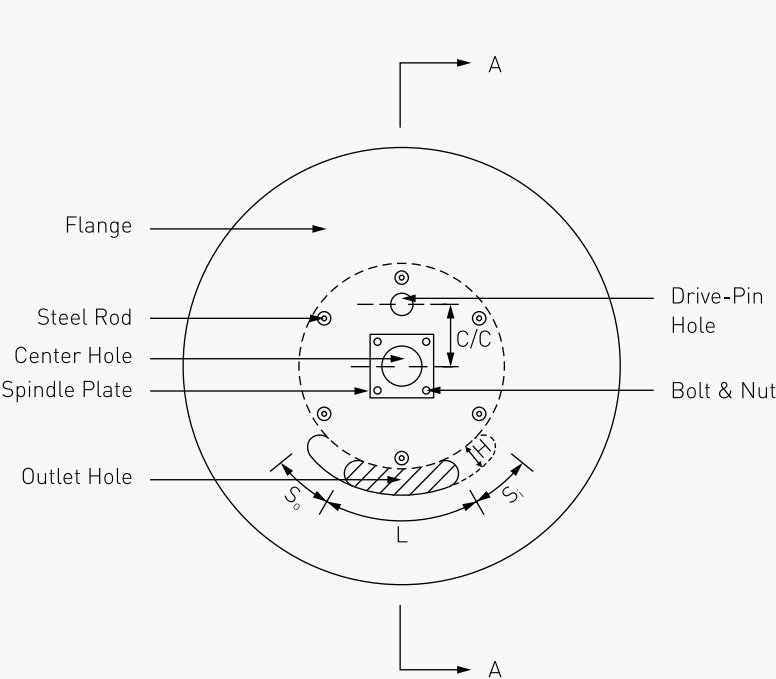
Flange Diameter (mm)	Barrel Diameter (mm)	Inner Width (mm)	Outer Width (mm)	Flange Thickness (mm)	Center Supporting Board	Barrel Batten Thickness (mm)	Center Hole Diameter (mm)	Number of Steel Rod
D <sub>o</sub>	D <sub>i</sub>	W <sub>i</sub>	W <sub>o</sub>	t <sub>f</sub>	B	t <sub>b</sub>	C	
600	300	380	480	50	-	25	80	4
700	350	480	580	50	-	25	80	4
800	400	480	580	50	-	25	80	4
900	450	480	580	50	-	25	80	4
1000	500	650	776	63	-	25	80	4
1200	600	650	776	63	-	25	80	5
1400	700	800	926	63	Yes	25	80	5
1600	800	800	926	63	Yes	25	80	6
1800	900	960	1112	76	Yes	38	105	6
2000	1000	960	1112	76	Yes	38	105	8
2200	1200	960	1112	76	Yes	38	105	8
2400	1400	1140	1320	90	Yes	38	105	8
2600	1500	1140	1320	90	Yes	38	105	8

Local Mixed Hard Wood / Soft Wood

Flange Diameter (mm)	Barrel Diameter (mm)	Inner Width (mm)	Outer Width (mm)	Flange Thickness (mm)	Center Supporting Board	Barrel Batten Thickness (mm)	Center Hole Diameter (mm)	Number of Steel Rod
D <sub>o</sub>	D <sub>i</sub>	W <sub>i</sub>	W <sub>o</sub>	t <sub>f</sub>	B	t <sub>b</sub>	C	
600	300	400	480	40	-	22	80	4
700	350	500	580	40	-	22	80	4
800	400	500	580	40	-	22	80	4
900	450	600	680	40	-	22	80	4
1000	500	600	700	50	-	22	80	4
1100	550	650	750	50	-	22	80	4
1200	600	700	800	50	-	22	80	4
1300	650	700	800	40	-	22	80	5
1400	700	750	850	40	-	22	80	5
1500	750	800	920	60	-	22	80	5
1600	800	800	920	60	-	22	80	6
1700	850	850	970	60	-	22	80	6
1800	900	850	970	60	-	22	105	6
1900	1000	900	1020	60	Yes	22	105	6
2000	1100	900	1020	60	Yes	22	105	6
2100	1100	900	1040	70	Yes	22	105	6
2200	1200	950	1090	70	Yes	22	105	6
2300	1300	1100	1260	80	Yes	22	105	8
2400	1400	1100	1260	80	Yes	22	105	8
2500	1400	1200	1360	80	Yes	22	105	8
2600	1500	1300	1460	80	Yes	22	105	8

- ▶ Wooden reels can be built to client's specification. Supply of flanges alone is possible.

Technical Drawing





# Steel Reel

Delivering Strength and Durability

We diversified into the manufacture of steel reels in 1987. Our steel reels provide strength and durability for heavy duty wire and cable applications.



## Manufacturing Highlights



### Large Production Capacity

Our factory is equipped to produce up to 500 pieces of steel reels of different sizes and specifications each month. We can easily accommodate any surge in demand for reels.



### Customisation

Our state-of-the-art manufacturing facility and technical expertise enables us to engage in new product development and custom work.

## Industry-standard Design Features

Our steel reels are equipped with the following features:

- The round inner edge flange has a smooth belly finish to facilitate cable-end attachments. It allows for rapid and uniform winding of cables and offers greater protection during transportation.
- The circumference and corrugated flange of the reels are strengthened to cushion possible heavy impact caused by repetitive handling and transportation.
- The outer circumference of the flange is punched with evenly spaced holes to facilitate ease battening.



### Knock-down Design System

Our knock-down design system helps increase the efficiency of assembling, dismantling and reassembling reels. Customers can save on transportation costs and the reels can be easily assembled in their plants using bolts.



### Aesthetics

Our cable reels can be made available in a variety of paint finishes. This may help in the differentiation of reels for different purposes.

## Market Presence



Our steel reels are exported worldwide. We supply to major wire and cable industry giants such as Kiswire, Power Cable Malaysia, Fujikura Federal Cable, Bekaert Southern Specialty Wire, Universal Cable, Leader Cable, Prysmian Group and many more. Our key export markets are Australia, Indonesia, New Zealand, Singapore and Argentina.





## Steel Reel Factory

Our steel reels provide robust and durable packing solutions for heavy duty wire and cable applications. Our factory is equipped to produce up to 500 pieces of varied steel reels each month. This allows us to accommodate any surge in demand.



# Flat Process Steel Reel

- ▶ **Material:** Mild Steel
- ▶ **Sizes:** Flange Ø 2,000mm to 4,000mm
- ▶ **Loading Weight:** Up to 200 tonne



▶ **Ideal for:**  
In-house process, to support the heavy weight load of wire ropes



# Flat Process Steel Reel

- ▶ **Material:** Mild Steel
- ▶ **Sizes:** Flange Ø 1,000mm to 4,000mm
- ▶ **Loading Weight:** Up to 15 tonne



▶ **Ideal for:**  
In-house process for cable and wire rope packing



# Flat Process Steel Reel

- ▶ **Material:** Mild Steel
- ▶ **Sizes:** Flange Ø 2,000mm to 4,000mm
- ▶ **Loading Weight:** Up to 50 tonne



▶ **Ideal for:**  
In-house process, drill-line process, to support the heavy weight load of wire ropes



# Flat Packing Steel Reel (Flange Folded Type)

- ▶ **Material:** Mild Steel
- ▶ **Sizes:** Flange Ø 2,300mm to 4,000mm
- ▶ **Loading Weight:** Up to 15 tonne



▶ **Ideal for:**  
Cable and wire rope packing. The folded flange design allows the height of the reel to be reduced for easier storage, transportation and container stuffing





# Flat Economy Steel Reel

- ▶ **Material:** Mild Steel
- ▶ **Sizes:** Flange Ø 1,000mm to 2,200mm
- ▶ **Loading Weight:** Up to 8 tonne



▶ **Ideal for:**  
Cable and wire rope packing. The simplified design allows for more economical pricing



# Flat Process Stainless Steel Reel

- ▶ **Material:** Stainless Steel SUS304
- ▶ **Sizes:** Flange Ø 1,000mm to 4,000mm
- ▶ **Loading Weight:** Up to 15 tonne



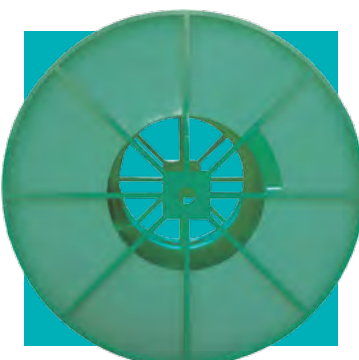
▶ **Ideal for:**  
In-house process



# Flat Economy Steel Reel

(Knock Down Bolted Type)

- ▶ **Material:** Mild Steel
- ▶ **Sizes:** Flange Ø 1,000mm to 2,200mm
- ▶ **Loading Weight:** Up to 8 tonne

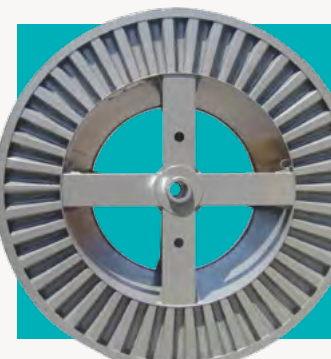


▶ **Ideal for:**  
Cable and wire rope packing. The simplified design allows for more economical pricing



# Corrugated Process Steel Reel

- ▶ **Material:** Mild Steel
- ▶ **Sizes:** Flange Ø 800mm to 4,000mm
- ▶ **Loading Weight:** Up to 15 tonne



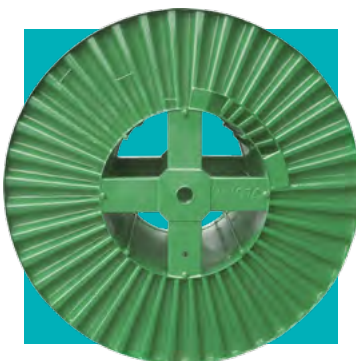
▶ **Ideal for:**  
In-house process for cable and wire rope packing





# Corrugated Packing Steel Reel

- ▶ **Material:** Mild Steel
- ▶ **Sizes:** Flange Ø 800mm to 4,000mm
- ▶ **Loading Weight:** Up to 15 tonne



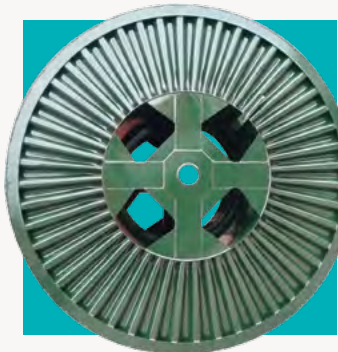
▶ **Ideal for:**  
Cable and wire rope packing



# Corrugated Packing Steel Reel

(Barrel Reinforcement)

- ▶ **Material:** Mild Steel
- ▶ **Sizes:** Flange Ø 2,000mm to 4,000mm
- ▶ **Loading Weight:** Up to 20 tonne



▶ **Ideal for:**  
Cable and wire rope packing. The barrel reinforcement enables higher loading capacity



# Corrugated Packing Steel Reel

(Galvanized)

- ▶ **Material:** Mild Steel
- ▶ **Sizes:** Flange Ø 800mm to 4,000mm
- ▶ **Loading Weight:** Up to 15 tonne



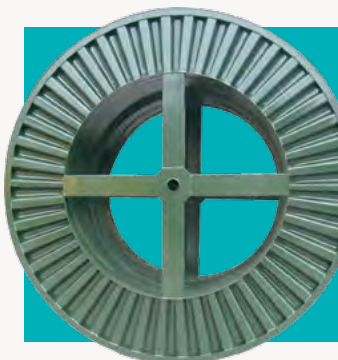
▶ **Ideal for:**  
Cable and wire rope packing. The finishing is hot dip galvanized to prevent rust



# Corrugated Packing Steel Reel

(Ramp)

- ▶ **Material:** Mild Steel
- ▶ **Sizes:** Flange Ø 2,000mm to 4,000mm
- ▶ **Loading Weight:** Up to 20 tonne



▶ **Ideal for:**  
Specialty high-voltage cable packing





# Corrugated Packing Steel Reel

(Knock Down Bolted Type - Design A)

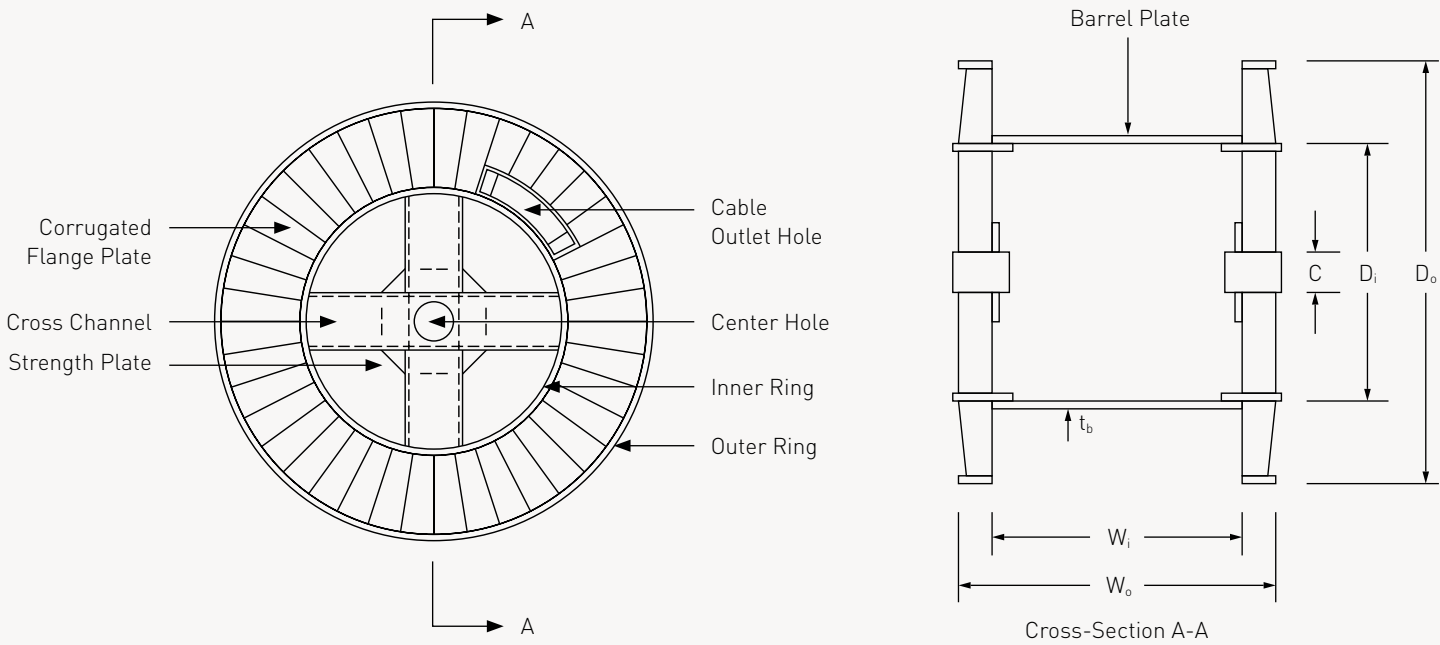
- ▶ **Material:** Mild Steel
- ▶ **Sizes:** Flange Ø 800mm to 3,000mm
- ▶ **Loading Weight:** Up to 15 tonne



▶ **Ideal for:**  
Cable and wire rope packing. The knock-down design system helps reduce transportation costs. The reels can be easily assembled using bolts



# Technical Drawing



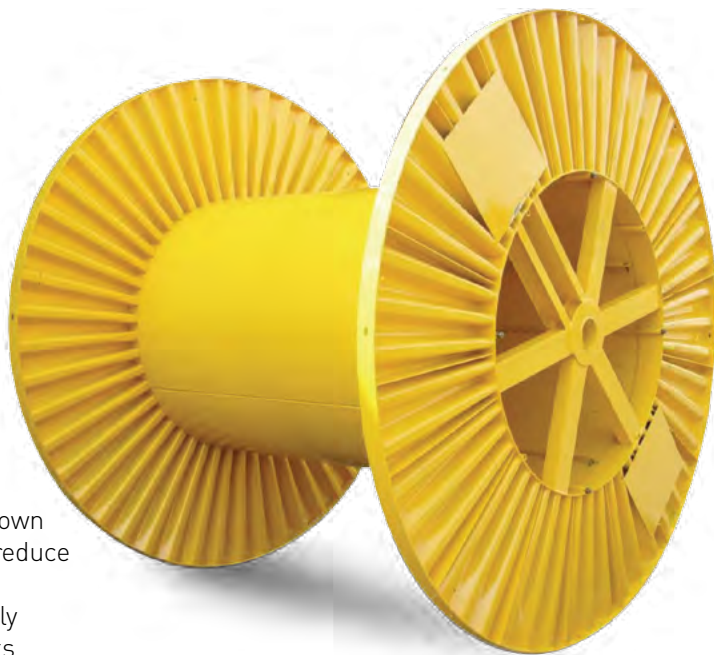
# Corrugated Packing Steel Reel

(Knock Down Bolted Type - Design B)

- ▶ **Material:** Mild Steel
- ▶ **Sizes:** Flange Ø 800mm to 3,000mm
- ▶ **Loading Weight:** Up to 15 tonne



▶ **Ideal for:**  
Cable and wire rope packing. The knock-down design system helps reduce transportation costs. The reels can be easily assembled using bolts



# Standard Dimensions

Flange Diameter (mm)	Barrel Diameter (mm)	Inner Width (mm)	Outer Width (mm)	Flange Thickness (mm)	Barrel Thickness (mm)	Center Hole Diameter (mm)	Inner Ring Thickness (mm)	Outer Ring Diameter (mm)
D <sub>o</sub>	D <sub>i</sub>	W <sub>i</sub>	W <sub>o</sub>	t <sub>r</sub>	t <sub>b</sub>	C		
1000	500	600	750	2	2	80	4.5	6
1100	550	600	750	2	2	80	4.5	6
1200	600	600	750	2	2	80	4.5	6
1300	650	600	750	2	2	80	4.5	6
1400	700	750	900	2	2	80	4.5	6
1500	750	750	900	2	2	80	4.5	6
1600	800	750	900	2	2	80	4.5	6
1700	850	870	1020	2	2	80	4.5	6
1800	900	870	1020	2	2	105	4.5	6
1900	1000	870	1020	2	2	105	4.5	6
2000	1100	1020	1170	2	2	105	6	9
2100	1200	1020	1170	2	2	105	6	9
2200	1300	1020	1170	2	2	105	6	9
2300	1400	1020	1170	2	2	105	6	9
2500	1600	1020	1220	2	2	105	6	9
2600	1600	1020	1220	2	2	105	6	9
2700	1600	1200	1400	2	2	105	6	9
2800	1600	1500	1700	2	2	105	6	9
3000	1800	1500	1700	2	3	105	6	9
3200	2000	1500	1700	2	3	105	6	9

- ▶ Steel reels can be built to client's specification. Supply of flanges alone is possible.





# Our Daily Commitment to the Environment

As a company that relies on wood and steel as materials, we are conscious that the Planet is our biggest partner. We are committed to environmentally sustainable practices in all aspects of our business. We wish to make the right choices to protect the future.

## Our Environmental Pledge

We support sustainable forestry practices by purchasing timber from companies that have been certified and comply with environmental legislations set out by national and international regulators. We ensure that our reels come from forests that are being regenerated, where biodiversity is maintained for future generations.

We minimise our environmental footprint by introducing efficiency in our manufacturing and distribution processes. We work to reduce overall waste in the production process, whilst looking at opportunities to re-use and recycle by-products and waste material.

We support third-party certification and green building programs. Forestry certification helps identify wood supplies that originate in responsibly managed forests. We undertook the Forest Stewardship Council® (FSC) certification in 2004 and the Programme for the Endorsement of Forest Certification (PEFC) in 2014. We are committed to implementing the FSC and PEFC standards in our procurement and manufacturing operations.



# We Believe in Partnership

We have a comprehensive portfolio of wooden and steel reels and are constantly at the forefront of reel design. We comply to the highest standards and offer a variety of customizable options.

We believe that by working closely together, we can discover, develop, and deliver the best value for your needs. Our dedicated team is ready to support you from concept to completion.

Let us be the sole supplier for all your reel needs

Contact your local sales representative  
[wmreel.com.my](http://wmreel.com.my)

# Certifications

We are constantly working to improve on our standards while creating better performance products. We have successfully obtained international certifications for our products, processes and systems.





**Weng Meng Industries Sdn. Bhd.**

No. 11, Jalan 8,  
Kompleks Perabot Olak Lempit,  
42700 Banting, Selangor, Malaysia.

**T** (603) 3149 1188  
**F** (603) 3149 3800  
**E** [reel@wm.com.my](mailto:reel@wm.com.my)  
**W** [wmreel.com.my](http://wmreel.com.my)